



OLD NAVY

OLD NAVY

FOR LEASE

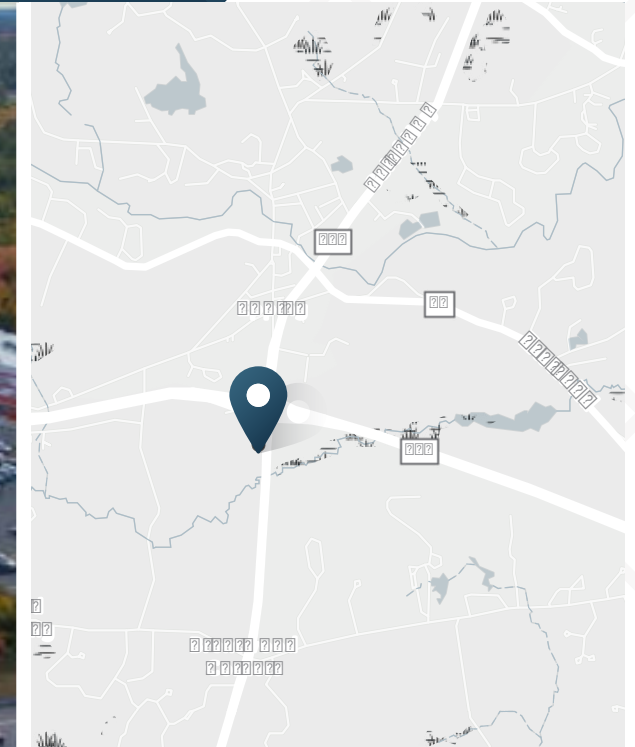
Brickyard Square

24 Calef Highway | Epping, NH



Brickyard Square

24 Calef Highway | Epping, NH



FOR LEASE

1,459 - 29,577 SF

Available

251,000 SF

GLA

Contact Broker

Asking Price

DESCRIPTION

- Strategically positioned off Routes 101 and 125, offering exceptional signage visibility at a heavily trafficked intersection.
- Benefit from steady foot traffic generated by prominent anchors such as an 80,000 SF Market Basket, 12-screen O'Neil Cinema and NH State Liquor.
- Over 3 Million visitors recorded at Brickyard Square in 2023 alone.
- Placed in the fastest-growing trade area in New Hampshire, with close proximity to University of New Hampshire and directly across the street from major retailers like Lowe's and Walmart Super Center.
- Brickyard Square is home to local favorites such as Popovers, Beach Plum, Lucas Salon, and The Community Oven.

CO-TENANTS INCLUDE



OLD NAVY

Marshalls



Michaels



TRAFFIC COUNTS

Calef Highway
State Rte 101

Year: 2020 | Source: Esri

17,277 VPD
47,475 VPD

Brickyard Square

24 Calef Highway | Epping, NH



Pending
 Available

MARKET BASKET
MORE FOR YOUR DOLLAR
76,452 SF

paper & store
7,526 SF

AT&T
MATRESS FIRM
6,311 SF

FAMOUS
5,175 SF

PET SMART
12,712 SF

OLD NAVY
13,653 SF

Marshalls
23,000 SF

Michaels
16,832 SF

ULTA
9,876 SF

POPOVERS
3,373 SF

AVAILABLE PAD
UP TO 2,400 SF

29,577 SF

PYLON SIGN

12,000 SF

5,000 SF

BRICKYARD SQUARE

BURGER KING

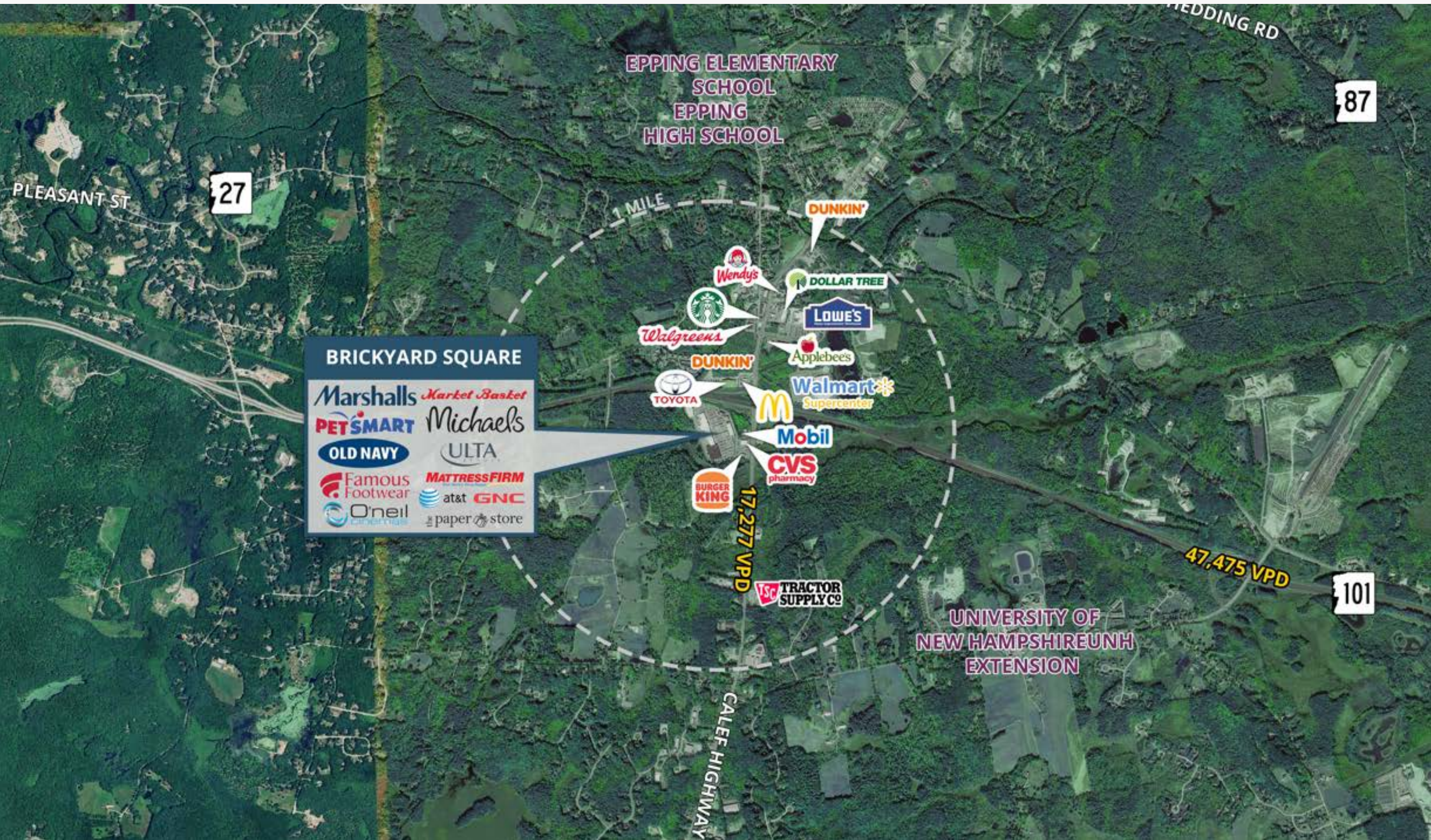
CVS

Mobil

125

CALEF HWY

KUMON 3,709 SF	Great Clips 1,081 SF	GENC 2,436 SF	LEE NAILS 1,139 SF	LUCAS SALON 1,664 SF	1,459 SF	WRAP CITY 1,630 SF	myeye dr. 2,133 SF	Cinco's 4,556 SF	1,943 SF	the Oven 4,927 SF
--------------------------	-------------------------	-------------------------	-----------------------	--------------------------------	-----------------	------------------------------	------------------------------	----------------------------	----------	-----------------------------



BRICKYARD SQUARE

- Marshalls
- Market Basket
- PET SMART
- Michaels
- OLD NAVY
- ULTA
- Famous Footwear
- MATTRESS FIRM
- O'neil
- at&t
- GNC
- paper store

EPPING ELEMENTARY SCHOOL
EPPING HIGH SCHOOL

1 MILE

DUNKIN'

Wendy's

DOLLAR TREE

Walgreens

LOWE'S

DUNKIN'

Applebee's

TOYOTA

Walmart Supercenter

McDonald's

Mobil

CVS pharmacy

BURGER KING

17,277 VPD

TRACTOR SUPPLY CO

47,475 VPD

UNIVERSITY OF NEW HAMPSHIRE UNH EXTENSION

27

87

101

PLEASANT ST

HEDDING RD

CALEF HIGHWAY

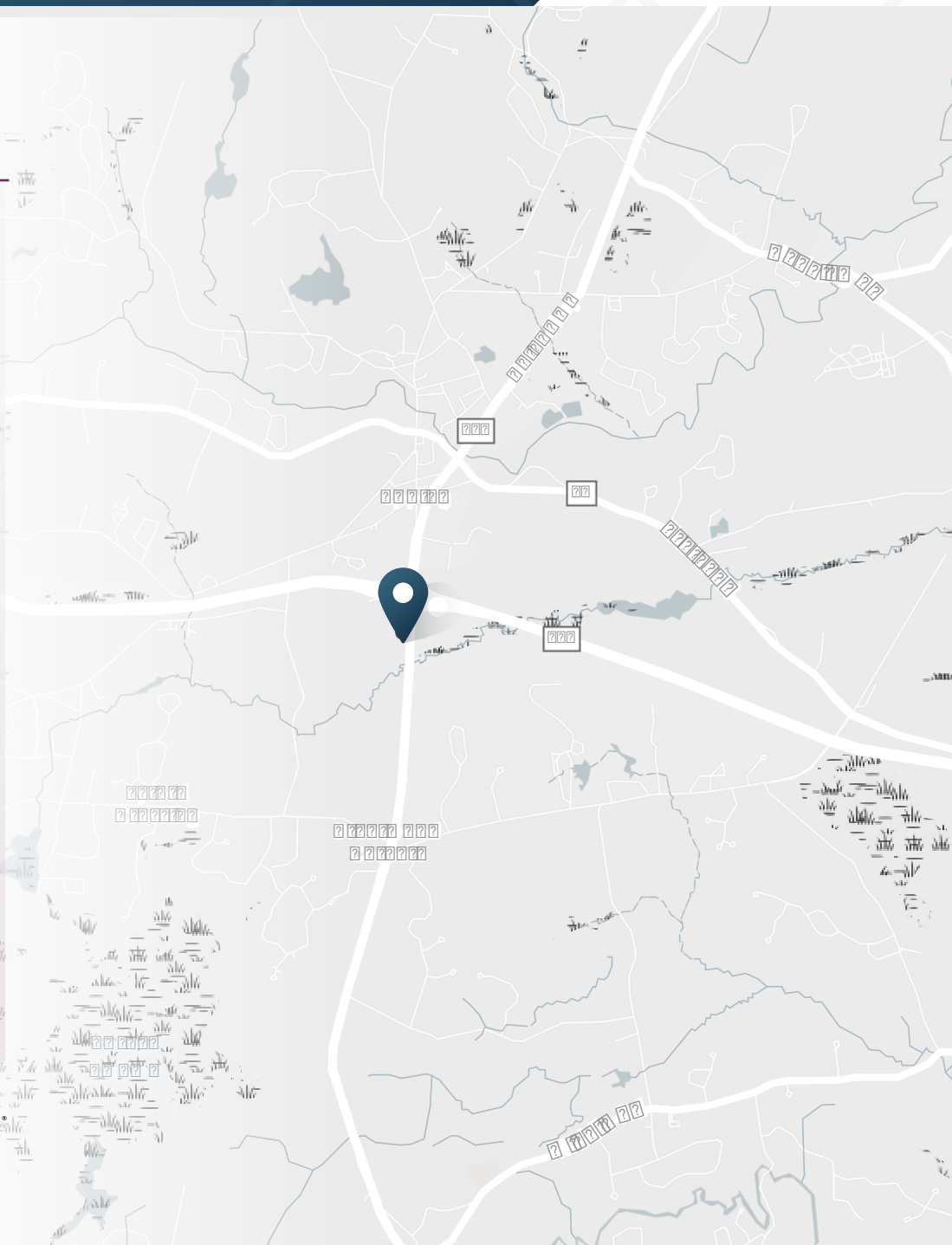
Brickyard Square

24 Calef Highway | Epping, NH



DEMOGRAPHIC HIGHLIGHTS

Population	1 mile	3 miles	5 miles
2025 Estimated Population	589	9,474	21,240
2030 Projected Population	621	9,908	21,945
Proj. Annual Growth 2025 to 2030	1.06%	0.90%	0.66%
Daytime Population			
2025 Daytime Population	2,239	9,510	17,945
Workers	1,942	5,356	9,118
Residents	297	4,154	8,827
Income			
2025 Est. Average Household Income	\$127,244	\$157,499	\$150,560
2025 Est. Median Household Income	\$89,121	\$125,436	\$119,211
Households & Growth			
2025 Estimated Households	255	3,598	8,181
2030 Estimated Households	275	3,850	8,632
Proj. Annual Growth 2025 to 2030	1.52%	1.36%	1.08%
Race & Ethnicity			
2025 Est. White	93%	92%	92%
2025 Est. Black or African American	1%	1%	0%
2025 Est. Asian or Pacific Islander	1%	1%	1%
2025 Est. American Indian or Native Alaskan	0%	0%	0%
2025 Est. Other Races	5%	6%	6%
2025 Est. Hispanic (Any Race)	1%	2%	2%



> **Want more?** Contact us for a complete demographic, foot-traffic, and mobile data insights report.





SRS Real Estate Partners
400 Fifth Avenue, Suite 105
Waltham, MA 02451
857.263.3839

Bryan Wright
617.245.0671
bryan.wright@srsre.com

Christian G. Janelle
617.872.1115
chris.janelle@srsre.com

Sam Mazza
617.880.7618
samantha.mazza@srsre.com

Joe Quinn
617.379.7327
joe.quinn@srsre.com

Jonathan Lapat
Broker of Record

SRSRE.COM

© SRS Real Estate Partners

The information presented was obtained from sources deemed reliable;
however SRS Real Estate Partners does not guarantee its completeness or accuracy.